



Belgium's **Chocolate Source**™

SPECIAL YEAR END HOLIDAY SELECTIONS: Pre-order basis
Order by 8/31 for delivery by 10/15
Order by 9/30 for delivery by 11/15



I. HOT CHOCOLATE STICKS

DELUXE 3-PACK

3.5oz. (99g.), 16 x 3-packs in cello box/case
Available in Milk (CL10020)
And Dark chocolate (CL10120)

DELUXE 1-PACK w/ MARSHMALLOWS

1.76oz. (50g.), x 48 single sticks in cello box
Available in Milk (CL11022)
and Dark Chocolate (CL11122)

HCS TIN W/ 9 assorted STICKS

CL20420; 10.48oz. (297g.), x4 tins/case
(Dark, Milk, Hazelnut
and Cointreau flavors)



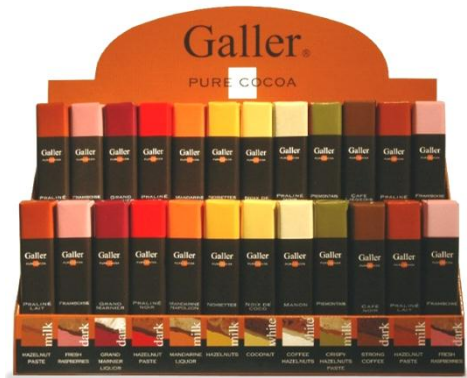
II. GALLER

GIFT BOX: G-7000:

24 pc. Mixed filled mini bars in gift box w/ transparent lid
(10 oz.), (each bar 0.42 oz./12g.), x20/case

FILLED BARS DISPLAY: G-7100

72 Mixed Filled Bars in display; each bar 2.5oz. (70g.)



66 Central Street, suite 7
Wellesley, MA 02482
877-INDULGE (463-8543)
Fax: 781-237-1787



Belgium's **Chocolate Source**™

www.belgiumschocolatesource.com
sales@belgiumschocolatesource.com

SPECIAL YEAR END HOLIDAY SELECTIONS: Pre-order basis
Order by 8/31 for delivery by 10/15
Order by 9/30 for delivery by 11/15

III. GUDRUN GIFT BOXES AND GAVARNY COCOA TRUFFLES

F522: BALLOTIN w/ Silver gift wrap and Sleeve:
8.8oz (250g.) x8/case



F603: GIFT BOX w/ 4 assorted Pralines:
1.76oz. (50g.) x 20/case



GAVARNY COCOA TRUFFLES
Available in Original (TRBL735) and Orange flavors (TRBL 736)
7oz. x20/case



IV. AMUSELLE LIQUOR CHOCOLATES

AM002: 18pc foil-wrapped liquor chocolates in cello gift box, 8 flavors: Cointreau 60%, Grand Marnier 50%, Scotch Whisky 60%, Remy Martin Cognac 58%, Saint James 54%, Mandarine Napoléon 60%, Amaretto 60%, Poire William 50%, 8.8oz (240g.), 14/case



V. DOLFIN 27 BARS GIFTBOX

D8800: Gift Box w/ 27 assorted 0.35oz. (10g). Bars (9 assorted flavors); 9.5oz. (270g.), 10/case

